

Technological Advances

- **Only the ClosureFAST™ catheter utilizes Segmental Ablation Technology™**
 - > Allows for rapid and uniform heating of the vein
 - > Eliminates the variability associated with a continuous pullback technology such as Endovenous Laser and the ClosurePlus™ catheter
- **Continuous Intra-operative Feedback from the RF Generator**
 - > Helps provide a consistent, safe, and effective treatment with temperature controlled energy delivery
- **Enhancements for a Simpler Procedure**
 - > Physician controls energy delivery with button in the sterile field
 - > No saline drip required

Procedure Speed Comparison (45cm vein length)

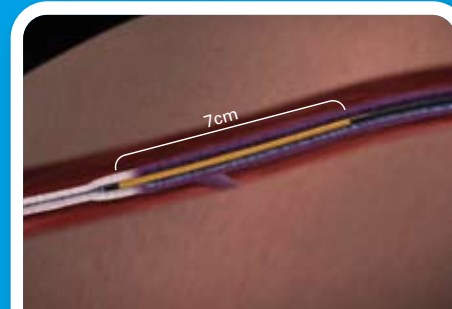
ClosureFAST™	120°C	3-5 min
ClosurePlus™	85°C	18-24 min
810nm laser	10-14 W	3-5 min ⁶
1320nm laser	8 W	7.5 min ⁷

⁶ EVLT® – Compare Alternatives; Diomed website 12/19/06
⁷ Proebstle, et. al., Abstract at ACP 18th Annual Congress (2004)

Segmental Ablation Technology with the ClosureFAST Catheter



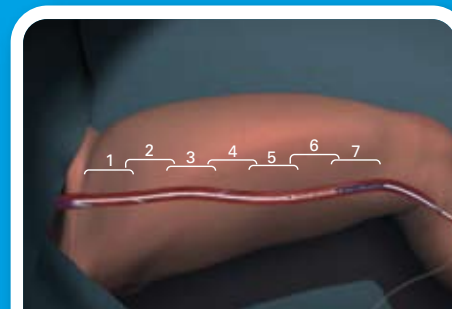
1. Catheter tip positioned 2cm distal to the saphenofemoral junction. Tumescent fluid is administered.



2. 7cm vein segment treated all at once during 20-second treatment cycle. Additional vein segments treated serially.



3. Catheter shaft markings allow fast and accurate catheter re-positioning between treatment cycles. No energy is delivered during re-positioning.



4. Treatment of 45cm vein length takes 3 to 5 minutes (seven treatment segments).

VNUS® Medical Technologies has a full line of products for the treatment of venous disease:

Closure® Procedure Packs and Procedure Supplies
Sterile, pre-assembled packs and individually packaged accessories to perform the Closure Procedure

Tumescent Anesthesia Pump and Infiltration Kit
For the rapid infiltration of Tumescent Anesthesia prior to treatment

Full Line of Ancillary Items
For pre & post procedural treatment of your vein patient

ClosureRFS™ Radiofrequency Stylet
FDA cleared for the treatment of incompetent perforator veins

ClosureFAST™ Catheter Ordering Information

As with all VNUS products, the ClosureFAST catheter is latex-free

Order#	Description	Working Length	Heating Element Length	Compatible Guidewire
CF7-7-60	7F ClosureFAST catheter	60 cm	7 cm	0.025"
CF7-7-100	7F ClosureFAST catheter	100 cm	7 cm	0.025"

➤ To order, call VNUS Customer Service at 1-888-797-VEIN (8346), Option 3



Copyright © 2008 VNUS Medical Technologies, Inc. All Rights Reserved.

Corporate Office
 VNUS Medical Technologies, Inc.
 5799 Fontanoso Way
 San Jose, CA 95138 USA
 Tel: 408-360-7200
 Fax: 408-365-8480
 www.vnus.com

VNUS® ClosureFAST™ Radiofrequency Catheter

Using Segmental Ablation Technology™ for a fast and effective treatment with mild recovery for your patients



VN25-137-C 2/08

Over 300,000 procedures performed with VNUS Closure® Catheters

(ClosureFAST™ and ClosurePlus™ catheters combined)

“The procedure is a pleasure to perform because it’s so quick... Most important, the patients are amazed and delighted with how fast and comfortable the procedure is”

– Charles Dietzek, DO, Voorhees, NJ

“A revolution in the treatment of varicose veins”

– Alan Lumsden, MD
Methodist Hospital, Houston, TX



Less Pain and Bruising than Endovenous Laser – for a better patient experience

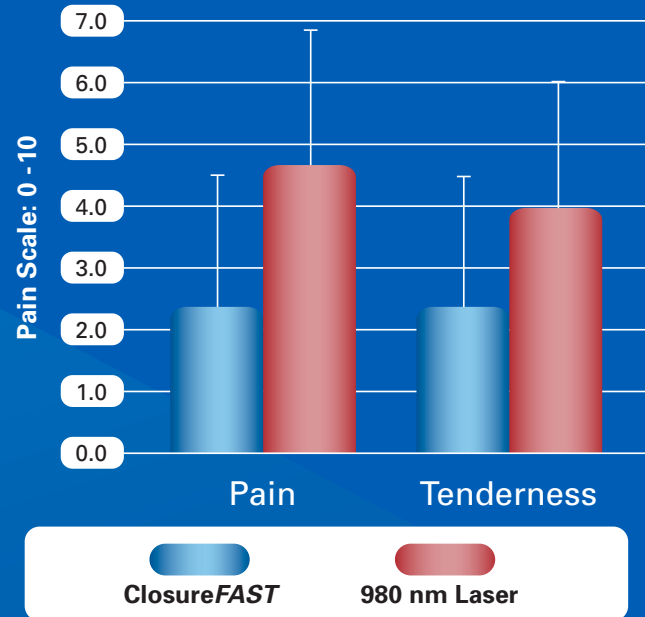
“While procedure time and short-term efficacy are comparable between ClosureFAST™ and laser, we’re definitely seeing a superior patient recovery profile with ClosureFAST.”

– Jose Almeida, MD, Miami, FL

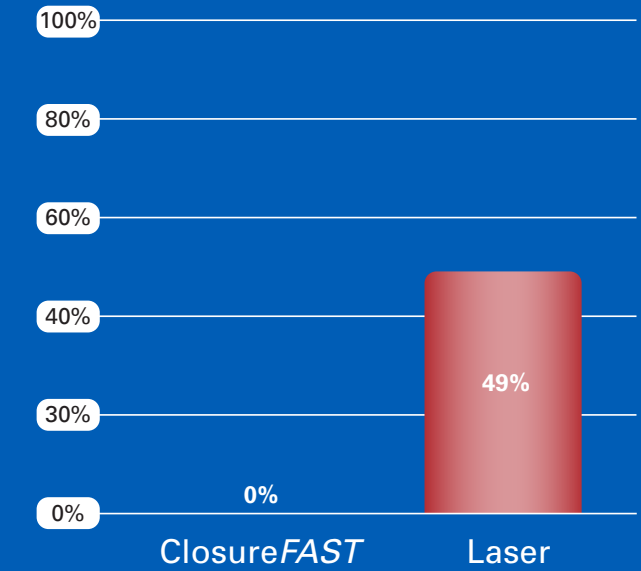
“The ClosureFAST system is an important advancement that combines the speed of laser treatment with the favorable side effect profile of RF ablation.”

– Prof. Thomas M. Proebstle, MD
University of Pecs, Hungary

Less Pain with ClosureFAST after Procedure¹



Moderate to Severe Ecchymosis after Procedure^{1,2}



ClosureFAST single treatment



810nm EVL at 70J/cm

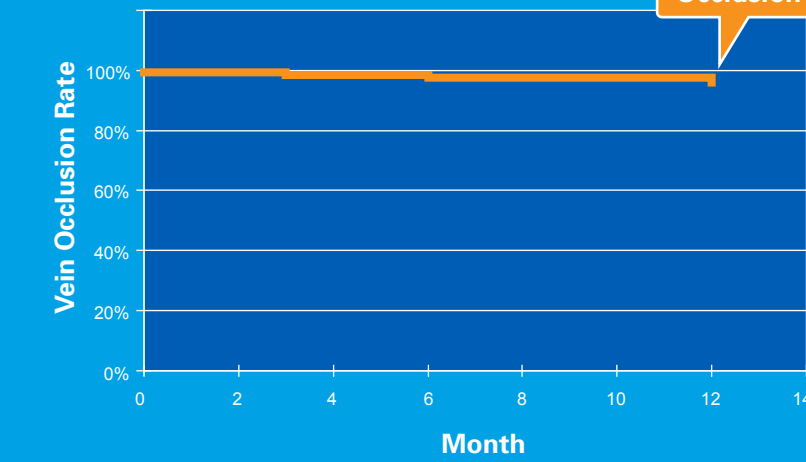


Uniform heating pattern for the ClosureFAST catheter compared with less controlled heating with endovenous laser (EVL) in beef liver model (video available on request)

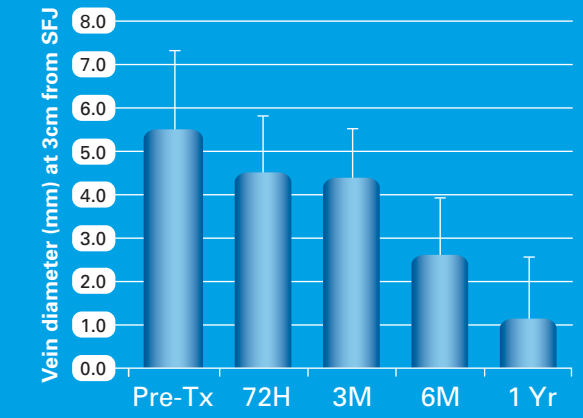
Proven Clinical Efficacy – for confidence in treatment results

Durable and Effective Treatment³

Multicenter Prospective Study

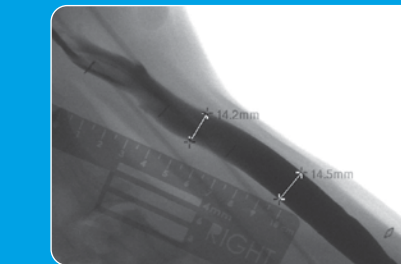


Progressive Vein Shrinkage³



Progressive shrinkage of the vein may be a marker of long term durability.⁴

Immediate vein occlusion following treatment with ClosureFAST catheter in caprine jugular vein model⁵

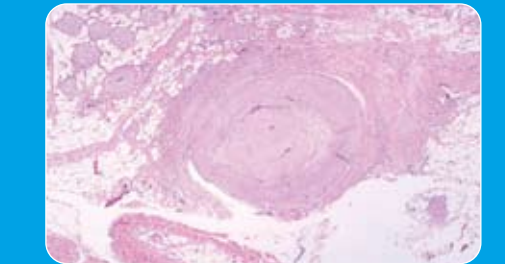


Pre-Treatment Vein Diameter 14.5mm



Occluded Acutely Post-Treatment

Fibrotic Vessel Sealing⁵



Goat saphenous vein at 12 weeks after ablation.

¹Almeida JI. Recovery trial interim results, 34th Veith Symposium. Nov 14-18, 2007. New York

²Moderate ecchymosis is defined as patients experiencing >25% but <50% of treated surface area ecchymosed; severe is defined as >50% of the surface area ecchymosed.

³Dietzek A. ClosureFAST is better than first generation radiofrequency ablation – a quantum leap forward, 34th Veith Symposium. Nov 14-18, 2007. New York

⁴Proebstle, et al. Treatment of the incompetent great saphenous vein by endovenous radiofrequency powered segmental thermal ablation: First clinical experience. J Vasc Surg 2008;47:151-6.

⁵Lumsden AB, Peden EK. Clinical Use of the New VNUS ClosureFAST Radiofrequency Catheter. EV Today Supplement. 2007 Jan 7-10, 2007